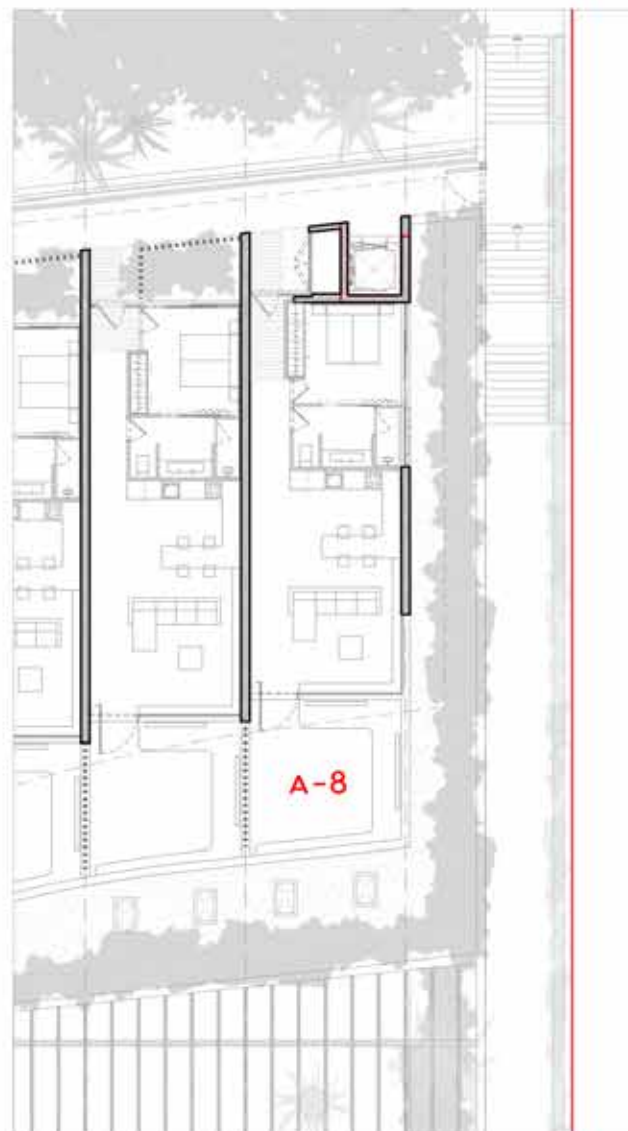




GROUND FLOOR / PLANTA BAJA



URBANIZATION / URBANIZACIÓN



APT. A-8

BUILD AREA / SUP. CONSTRUIDAS

GROUND FLOOR/PLANTA BAJA	79.71 m ²
TERRACE/TERRAZA (50%)	15.44 m ²
FRONT YARD/PATIO (50%)	2.33 m ²
TOTAL	97.48 m²

USABLE AREA / SUP. ÚTILES

01. KITCHEN/COCINA	11.75 m ²
02. LIVINGROOM/GALÓN	28.66 m ²
03. BEDROOM/DORMITORIO	13.83 m ²
04. BATHROOM/BANO	7.71 m ²
05. HALLWAY/DISTRIBUIDOR	7.99 m ²
TOTAL	69.92 m²